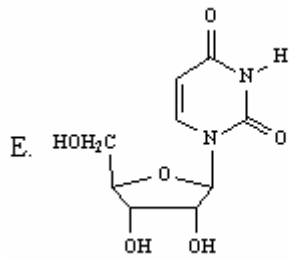




A. GAUCGUAAA

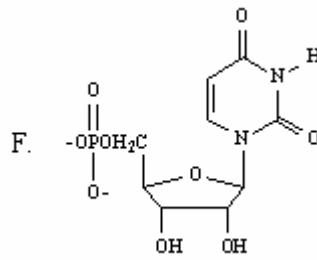
C. translation



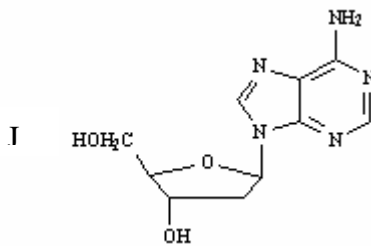
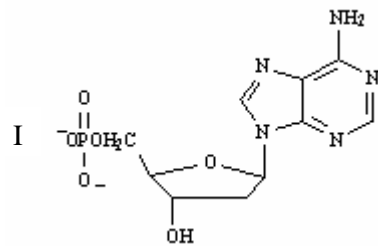
G. CGTCCATTA

B. AUGGCUGAG

D. transcription



H. AGATCGCTC



K. replication

\_\_\_\_\_ a pyrimidine nucleotide

\_\_\_\_\_ RNA base sequence with guanine at the 3' end

\_\_\_\_\_ DNA base sequence with cytosine at the 3' end

\_\_\_\_\_ uridine

\_\_\_\_\_ a purine nucleoside

\_\_\_\_\_ RNA base sequence complementary to the DNA base sequence which codes for  
Leu-Ala-Phe: CTAGCATTT

\_\_\_\_\_ 2'-deoxyadenosine 5'-phosphate

\_\_\_\_\_ process by which mRNA directs protein synthesis

4. Describe the function of a **ribosome** in protein synthesis.

5. What is a **chaperone** and why is a chaperone necessary?